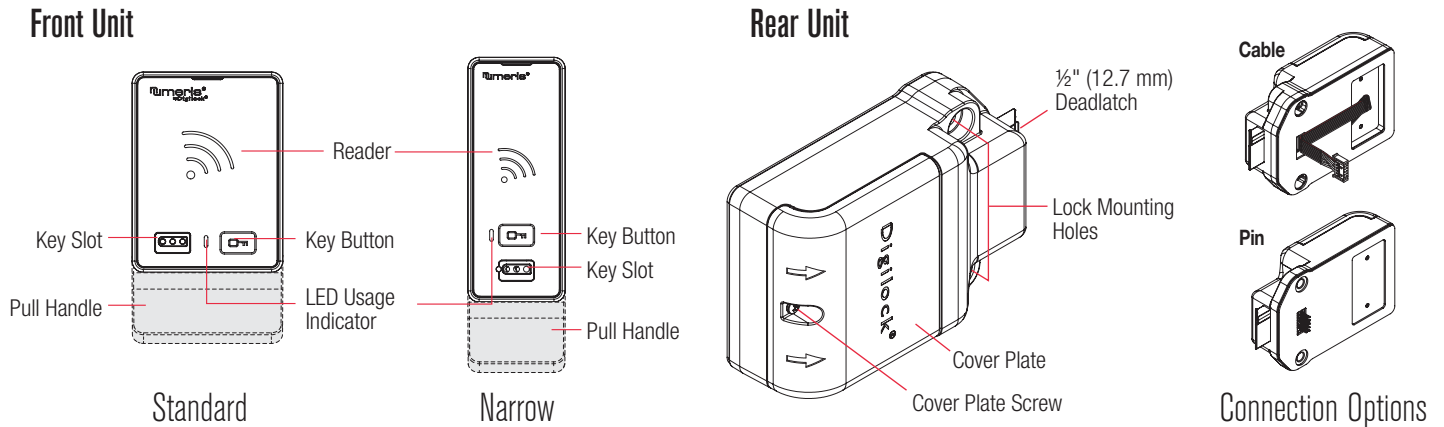
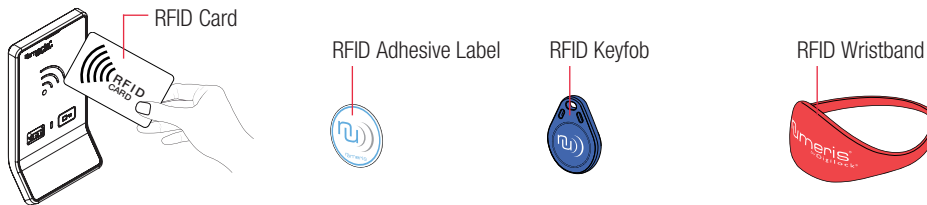


Aspire locks with a touch RFID interface are operated by an RFID credential or by an ADA compliant User Key. Manager credentials (Manager Key or RFID) provide management access and/or external power. Programming is accomplished via a Programming Key unique to the lock system. An optional mobile application tool simplifies lock system management and provides audit trail.

Lock Parts



RFID Credentials



Keys

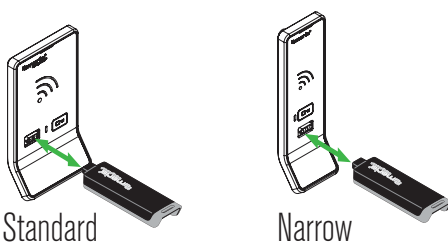
	User Key	Manager Key ¹	Programming Key ²
Operates the lock	•	•	•
Overrides user access		•	•
Allows management inspection		•	•
Provides external power		•	•
Programs Manager Keys to the lock			•
Assigns user credential ³		•	

¹ Up to six manager credentials (Manager Key or RFID) may be programmed to each lock. If managed with the optional Mobile App, up to 250 manager credentials may be programmed to each lock.

² One Programming Key allowed per lock system.


³ Up to 20 user credentials (User Key or RFID) may be programmed to each lock. If managed with the optional Mobile App, up to 250 user credentials may be programmed to each lock.

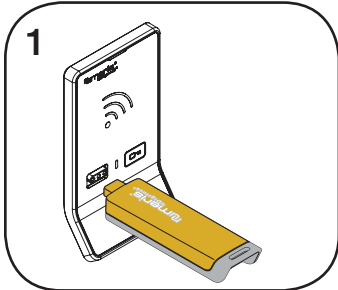
Key Insertion



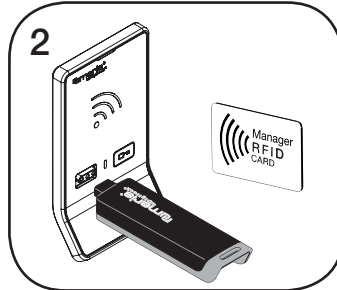
Numeris logo must face up on standard and narrow body locks.

Setup

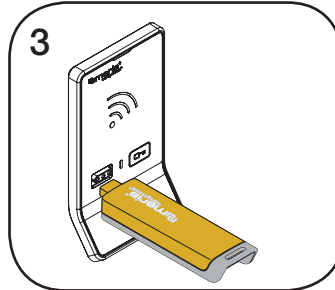
Locks are shipped with factory default settings (only operates by pressing ). Each lock must be setup to operate with a Programming Key and manager credentials (Manager Key or RFID).



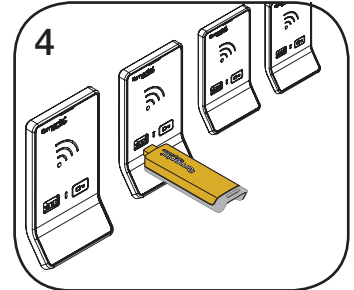
1
Insert the Programming Key.
A two-tone beep will be heard and the LED and Reader will turn on.



2
Insert one Manager Key or present one Manager RFID at a time.
A two-tone beep will be heard for each manager credential programmed.



3
Insert the Programming Key.
A two-tone beep will be heard and the LED and Reader will turn off.

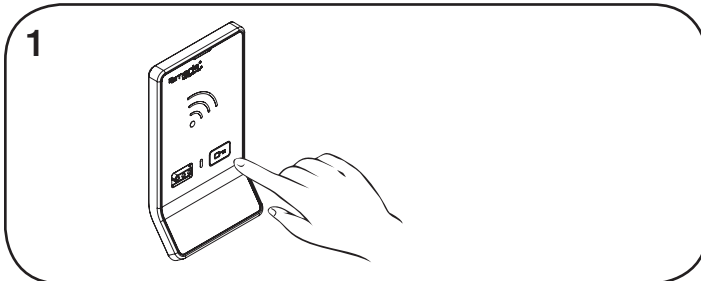



4
Repeat above steps for each lock or follow instructions to [Express Register Manager Credentials](#) to setup all the locks.

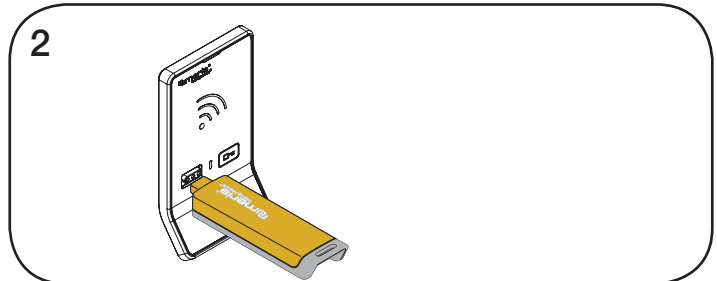
Programming Instructions

Express Register Manager Credentials

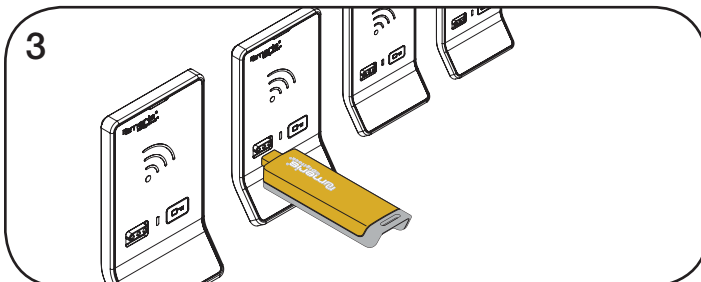
The Programming Key can quickly program the locks to operate with the same manager credentials.



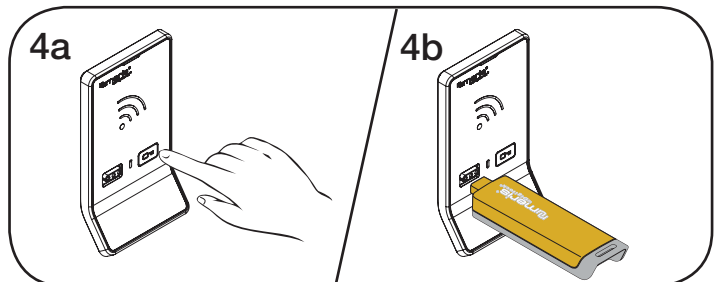
1
Go to the lock already programmed to operate with the manager credentials.
Touch and hold  for 10 seconds (a two-tone beep will be heard after 5 seconds followed by 2 sets of two-tone beeps after 10 seconds) then release. The LED will flash.




2
Insert the Programming Key.
Two sets of two-tone beeps will be heard and the LED will turn off.



3
Insert the Programming Key to program each lock to operate with the same manager credentials.
Two sets of two-tone beeps will be heard and the LED will flash once to indicate successful programming.



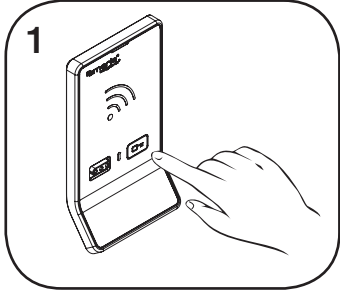
4a
End express registration mode.*
Go to any programmed lock.
4b
Touch  then insert the Programming Key.

*The Programming Key will continue to function in express registration mode until it is used to operate a lock.

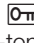
Programming Instructions

Add Manager Credentials

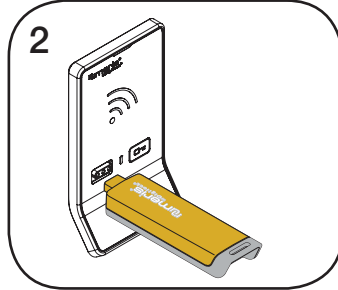
Manager credentials can be programmed to the locks at any time.



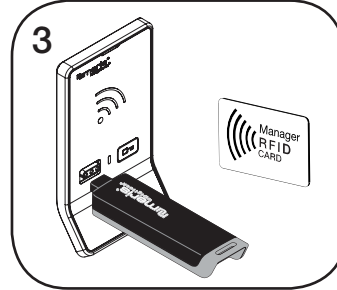
Go to a lock requiring additional manager credentials.

Touch and hold  for 5 seconds (a two-tone beep will be heard after 5 seconds) then release.

The LED will flash and the Reader will turn on.

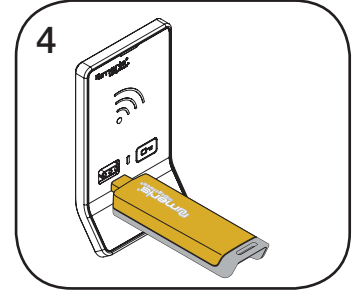


Insert the Programming Key.
A two-tone beep will be heard.



Insert each additional Manager Key or present each Manager RFID one at a time.

A two-tone beep will be heard for each manager credentials programmed.

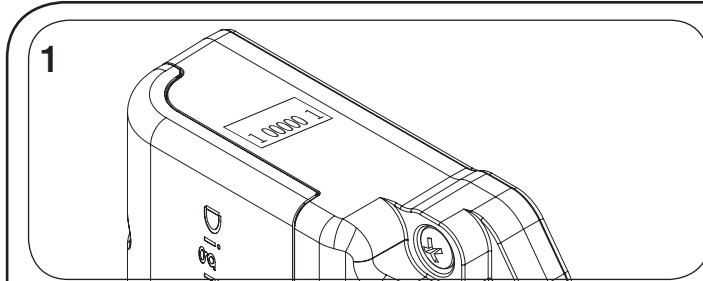


Insert the Programming Key.
A two-tone beep will be heard and the LED and Reader will turn off.

Repeat above steps for each lock or follow instructions to [Express Register Manager Credentials](#) to quickly program the same manager credentials to operate multiple locks.

Replace Programming Key or Manager Credentials

The locks must be reprogrammed to prevent the lost/stolen Programming Key or manager credentials from operating a lock.

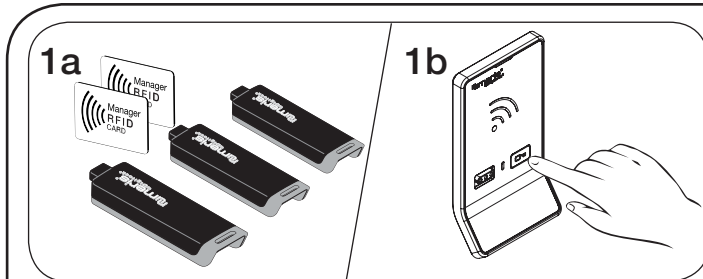


To replace the Programming Key:

Note the order or serial number (found on the lock's rear unit).



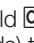
Contact Digilock Support to purchase a replacement Programming Key.



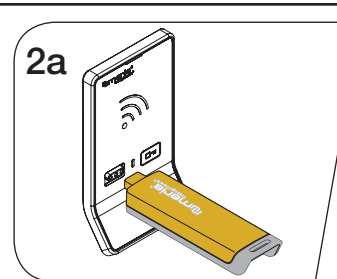
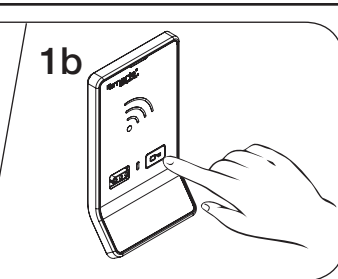
To replace Manager Credentials:

Collect all remaining and replacement manager credentials.

Go to any lock operated by the lost/stolen manager credentials.

Touch and hold  for 5 seconds (a two-tone beep will be heard after 5 seconds) then release.

The LED will flash and the Reader will turn on.

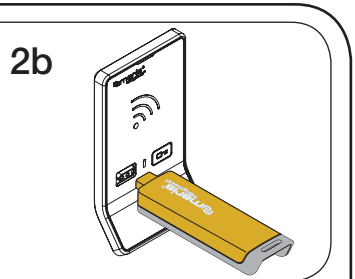


Insert the Programming Key.
A two-tone beep will be heard.

Insert the Programming Key again.

Three sets of two-tone beeps will be heard and the LED and Reader will turn off. All previously programmed manager credentials will be erased.

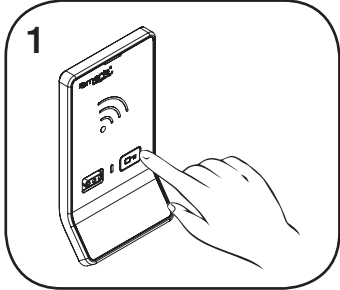
Follow instructions to [Add Manager Credentials](#) to program the remaining and replacement manager credentials to the locks.



Programming Instructions

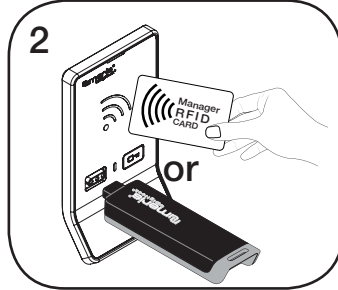
Assign User Credentials

Up to 20 user credentials (User Key or RFID) may be assigned to each lock.



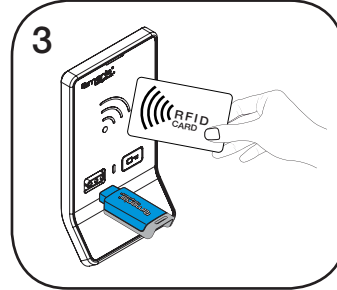
Touch and hold **Prog** for 5 seconds (a two-tone beep will be heard after 5 seconds) then release.

The LED will flash and the Reader will turn on.



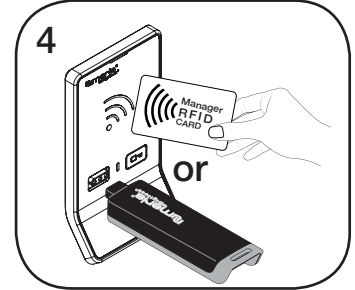
Insert a valid Manager Key or present a valid Manager RFID.

A two-tone beep will be heard.



Insert each User Key or present each User RFID one at a time.

Two sets of two-tone beeps will be heard for each user credential assigned to the lock.

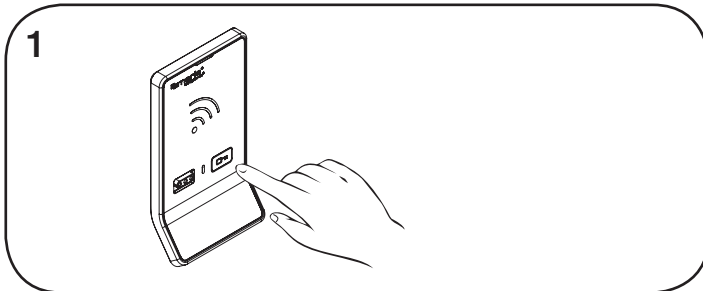


Insert a valid Manager Key or present a valid Manager RFID.

A two-tone beep will be heard and the LED and Reader will turn off.

Express Register User and Manager Credentials

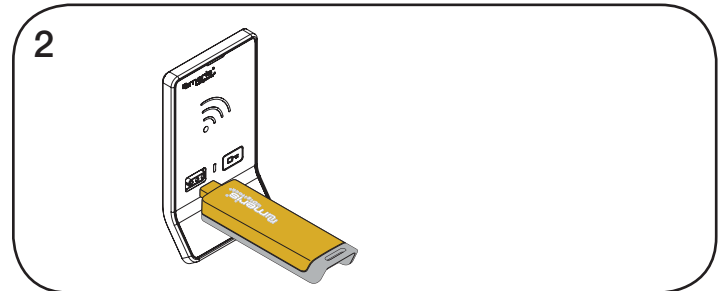
The Programming Key can quickly program multiple locks to operate with the same user and manager credentials.



Go to a lock already programmed to operate with the user and manager credentials.

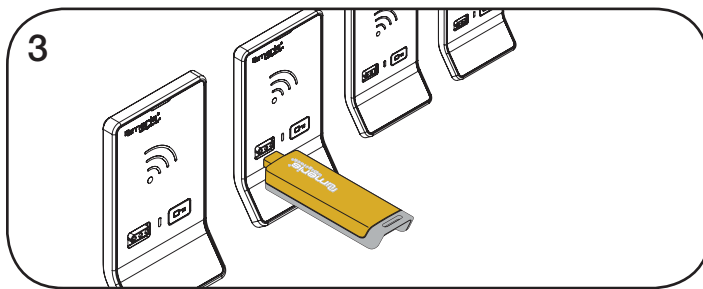
Touch and hold **Prog** for 15 seconds (a two-tone beep will be heard after 5 seconds followed by 2 sets of two-tone beeps after 10 seconds followed by 3 sets of two-tone beeps after 15 seconds) then release.

The LED will flash.



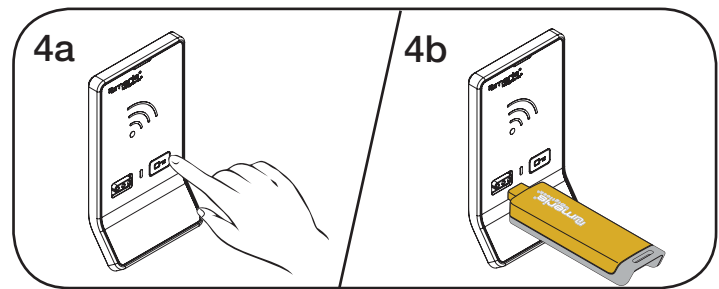
Insert the Programming Key.

Two sets of two-tone beeps will be heard and the LED will turn off.



Insert the Programming Key to program each lock to operate with the same user and manager credentials.

Two sets of two-tone beeps will be heard and the LED will flash once to indicate successful programming.



End express registration.*

Go to any programmed lock

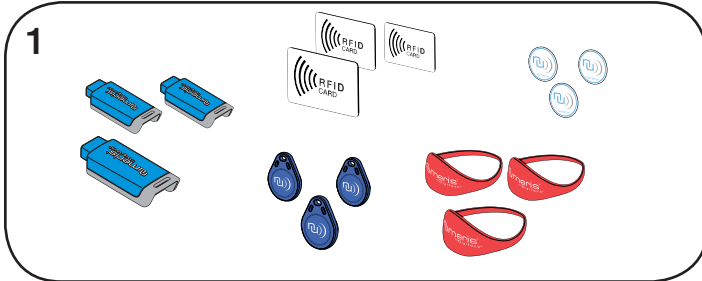
Touch **Prog** then insert the Programming Key.

*The Programming Key will continue to function in express registration mode until it is used to operate a lock.

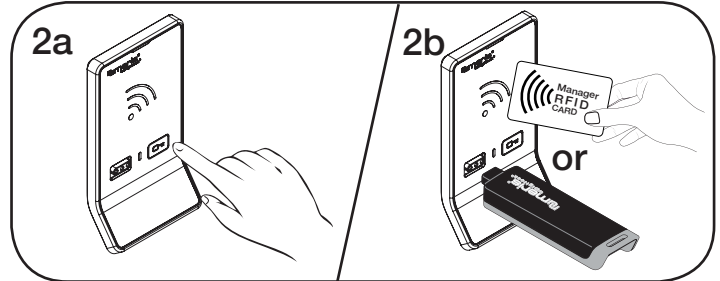
Programming Instructions


Remove User Credentials

The locks must be reprogrammed to remove user credentials from operating a lock.



1 Collect all remaining and replacement user credentials.

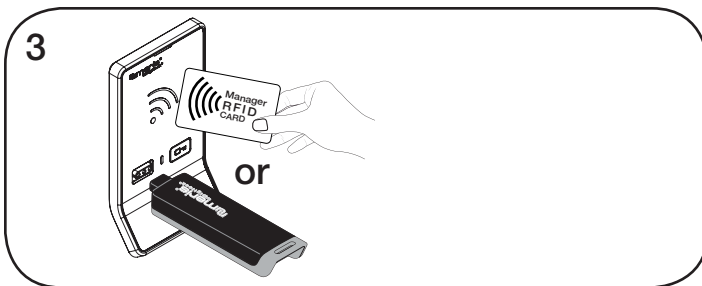


2a Touch and hold  for 5 seconds (a two-tone beep will be heard after 5 seconds) then release.

The LED will flash and the Reader will turn on.

Insert a valid Manager Key or present a valid Manager RFID.

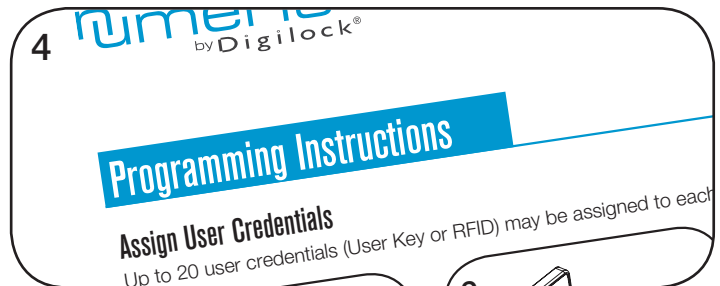
A two-tone beep will be heard.



3 Insert a valid Manager Key or present a valid Manager RFID again.

Three sets of two-tone beeps will be heard and the LED and Reader will turn off.

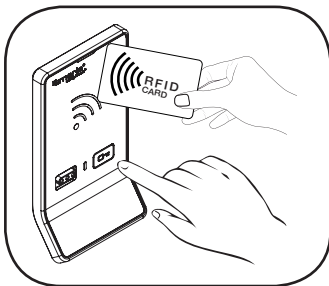
All previously assigned user credentials will be removed.



4 Follow [Assign User Credentials](#) instructions to assign the remaining and replacement user credentials.

Operating Instructions - In Assigned Use Functionality

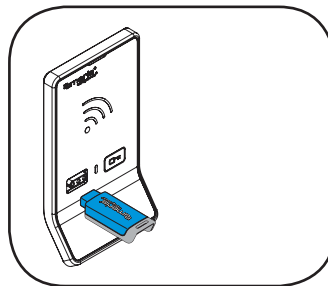
In assigned use functionality, users operate the lock with their assigned user credential (User Key or RFID).



Operate with a User RFID

To unlock: Touch  then present an assigned User RFID.

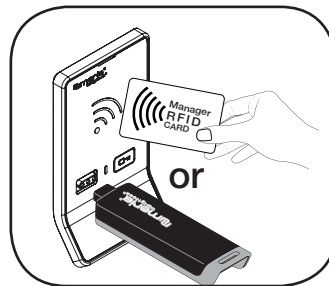
To relock: Close the door.




Operate with a User Key

To unlock: Insert an assigned User Key.

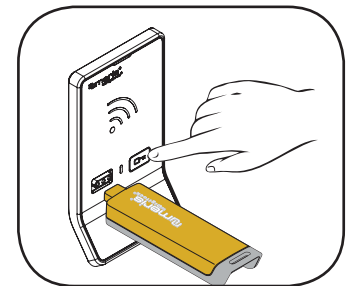
To relock: Close the door.



Operate with a Manager Credential

To unlock: Insert a valid Manager Key or touch  then present a valid Manager RFID.

To relock: Close the door.



Operate with the Programming Key

To unlock: Touch  then insert the Programming Key.

To relock: Close the door.

Support

Error Condition Indicators

10 rapid beeps:

The lock is binding which means that either door alignment or stored items are preventing the lock from operating. Press on the door while operating the lock. If error condition persists, contact Digilock support for assistance.

2 sets of three beeps:

The batteries are low. Replace the batteries.

Does not Unlock with a User Credential (User Key or RFID)

The lock does not recognize the user credential. For immediate access, operate with a valid manager credential. Follow instructions to [Assign User Credentials](#) to assign the user credential to the lock.

Does not Operate with a Manager Credential (Manager Key or RFID)

The lock does not recognize the manager credential. Follow instructions to [Add Manager Credentials](#) to program the manager credential to the lock. For immediate access, operate with another valid manager credential or with the Programming Key.

Does not Operate with the Programming Key

The lock does not recognize the Programming Key. If the Programming Key has been replaced, operate with the Replacement Programming Key. Contact Digilock support for additional assistance.

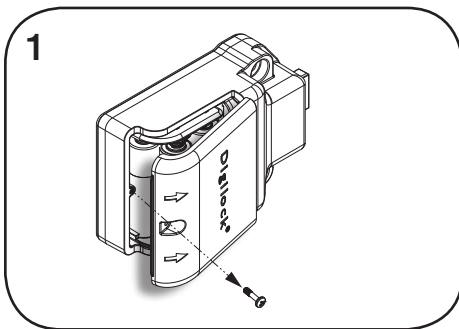
No Audible Feedback when is Pressed

- The batteries may need to be replaced. For immediate access, operate with a valid Manager Key.
- The front unit may not be properly connected to the rear unit. Remove the lock from the door and check the connection.

Battery Replacement

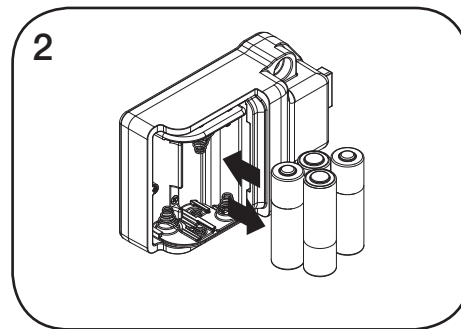
It is not necessary to remove the lock from the door. In case of battery failure, operate with a valid Manager Key.

CAUTION: Risk of explosion or leakage if battery is replaced by an incorrect type, mixed with a different battery type, or inserted backwards. Replace all batteries of a set at the same time. Be sure to insert batteries with correct polarities. Remove exhausted batteries from product promptly and dispose of used batteries according to the battery manufacturer's instructions.



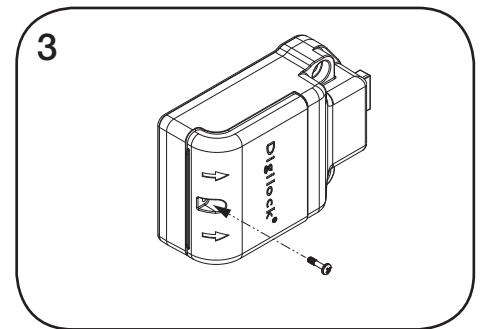
Remove the screw from the Cover Plate with a Phillips head screwdriver.

Remove the Cover Plate by lifting the tab at the edge of the cover, below the arrows.



Remove the batteries from the housing.

Replace with four premium alkaline AA batteries. Dispose or recycle used batteries according to local regulations.



Replace the Cover Plate and secure with the screw.